



# Invest for Excel **complete** installation manual

**Four easy steps**

Last updated on November 4, 2020

## Table of contents

<b>1. Acquire the license number.....</b>	<b>3</b>
<b>2. Download the package.....</b>	<b>3</b>
<b>3. Download the package.....</b>	<b>4</b>
<b>4. Install the package .....</b>	<b>5</b>
<b>5. Activate your installation .....</b>	<b>9</b>
Activate online .....	9
Activate offline .....	11
Deactivate .....	13
<b>Advanced installation options.....</b>	<b>15</b>
<b>Microsoft Excel versions supported .....</b>	<b>18</b>
<b>Digital signature .....</b>	<b>18</b>
<b>Privacy Policy .....</b>	<b>19</b>
<b>Have questions? .....</b>	<b>19</b>

## 1. Acquire the license number

### 1.1. Existing customers

Existing customers receive their license number during the purchase. If you cannot find yours, we are happy to look it up for you, please contact DataPartner Support by emailing [support@datapartner.fi](mailto:support@datapartner.fi), calling +358 19 54 10 100 or using online chat at <https://www.datapartner.fi/chat>.

The license number looks like this:

XXXXXXXXXXXXXXXXXX

### 1.2. Prospective customer

You can either get the free trial license or buy full license. Either option takes only several minutes to complete.

- **For free trial license**, fill a short download form at <https://www.investforexcel.com/#download>  
The 30-days free trial license (with some limitations) is generated automatically and is instantly sent to you in the confirmation email.
- or -
- **For a full license**, choose the licensing model, edition, amount of users and submit the payment at <https://www.investforexcel.com/buy>.  
The new license number for your full license is generated automatically and instantly sent to you in the purchase confirmation email.

## 2. Download the package

### 2.1. Existing customers - DataPartner Extranet

Existing customers can download the Invest for Excel installation package at the DataPartner Extranet (<https://www.datapartner.fi/extranet>). Access to DataPartner Extranet requires username and password, which each customer receives every year by e-mail (those change every year). If you do not have yours, please contact DataPartner Support by emailing [support@datapartner.fi](mailto:support@datapartner.fi), calling +358 19 54 10 100 or using online chat at <https://www.datapartner.fi/chat>.



Invest\_For\_Excel\_  
DALLAS\_Activate  
d\_3.9.002.exe

## 2.2. Prospective customer – Download form

The same instant **confirmation email** from first step also contains your individual Invest for Excel download link.



Invest\_For\_Excel\_  
DALLAS\_Activate  
d\_3.9.002.exe

## 3. Download the package

### 3.1. Existing customers - DataPartner Extranet

Existing customers can download the Invest for Excel installation package at the DataPartner Extranet (<https://www.datapartner.fi/extranet>). Access to DataPartner Extranet requires username and password, which each customer receives every year by e-mail (those change every year). If you do not have yours, please contact DataPartner Support by emailing [support@datapartner.fi](mailto:support@datapartner.fi), calling +358 19 54 10 100 or using online chat at <https://www.datapartner.fi/chat>.

### 3.2. Prospective customer – Download form

Prospective customers can download the package either by:

- filling a short download form at <https://www.investforexcel.com/#download>  
- or -
- making an instant purchase at <https://www.investforexcel.com/buy>

In both cases, a custom download link is automatically generated and is available for download instantly. The process takes just a few minutes.



Invest\_For\_Excel\_  
DALLAS\_Activate  
d\_3.9.002.exe

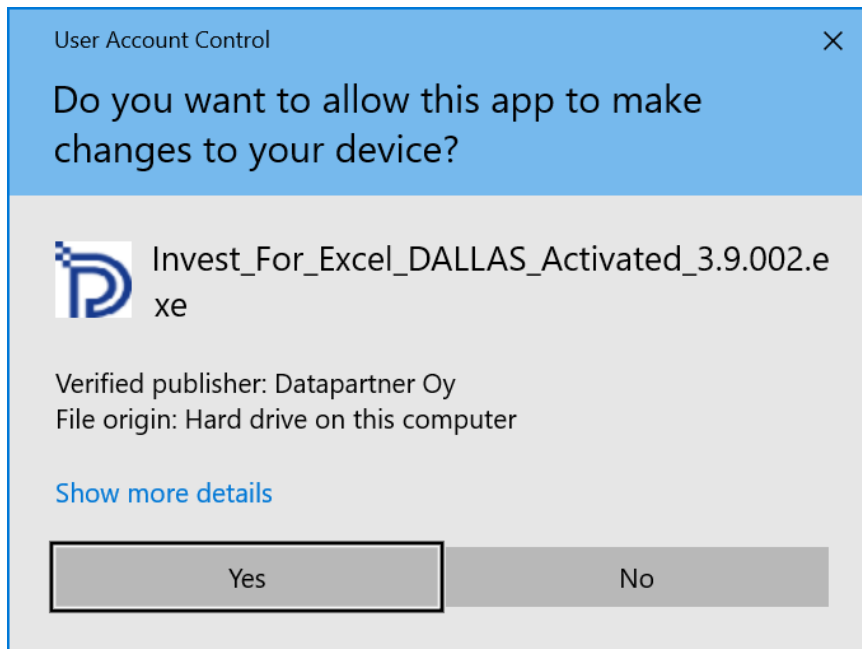
## 4. Install the package

**Note:** This section describes the most common individual computer installation option. For silent, remote or group policy-based installation options, see Advanced installation options chapter.

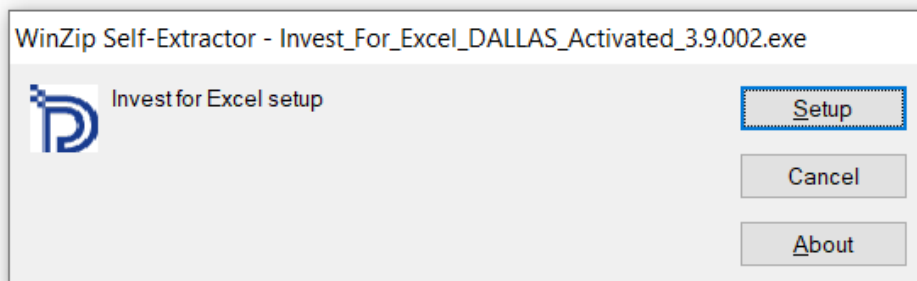
Installation is very simple and can be completed in just a few minutes.

**Note:** Like any other Windows installation, it requires administrator-level permission to install. If your Windows user account does not have the administrator-level permission, you will need to ask your IT administrator to approve the installation.

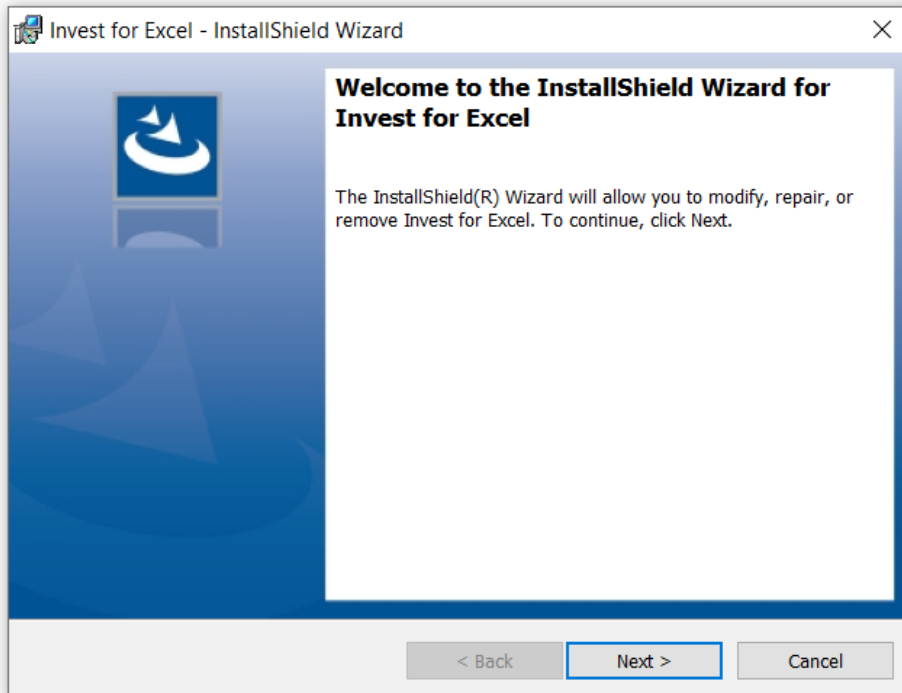
1. Run the downloaded installation package
2. Approve it (administrator-level permission required)



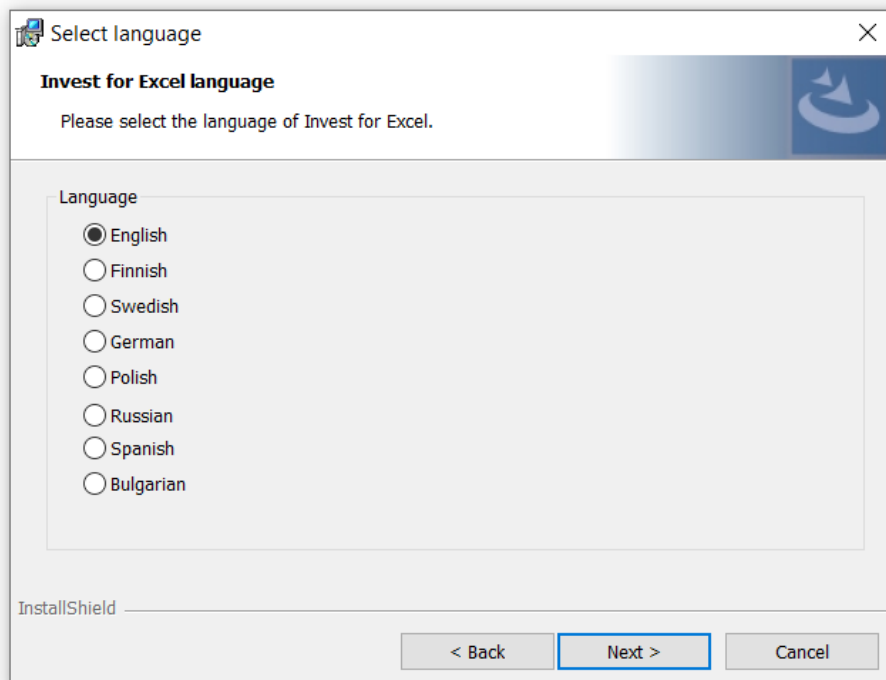
3. Press Setup



4. Press Next

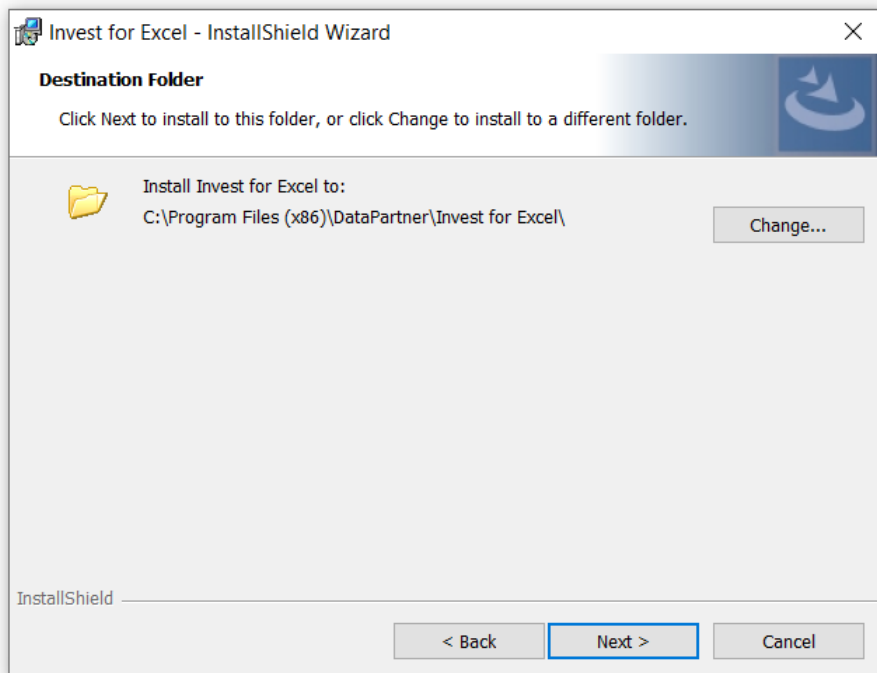


5. Choose the desired language

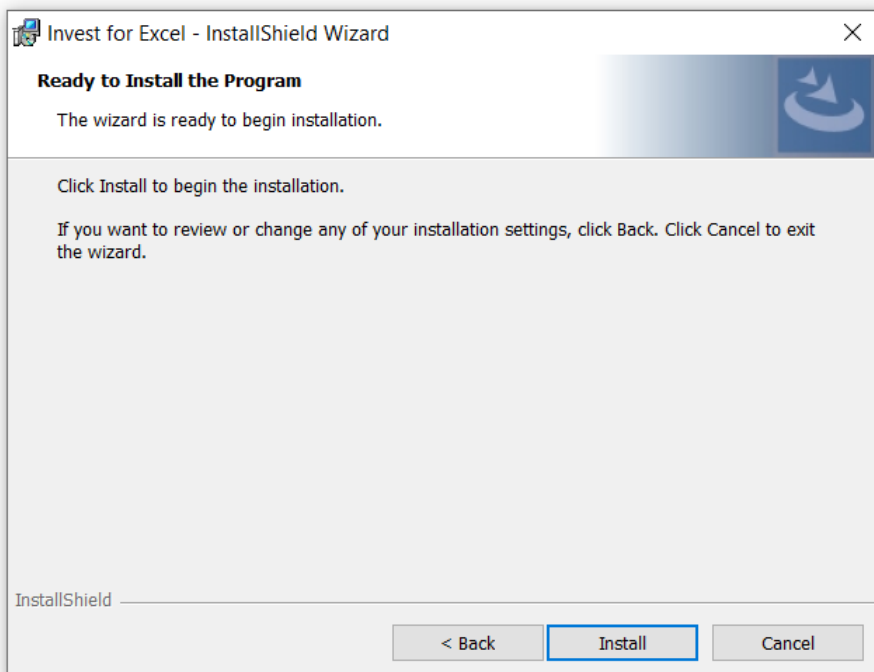


6. Choose the installation location

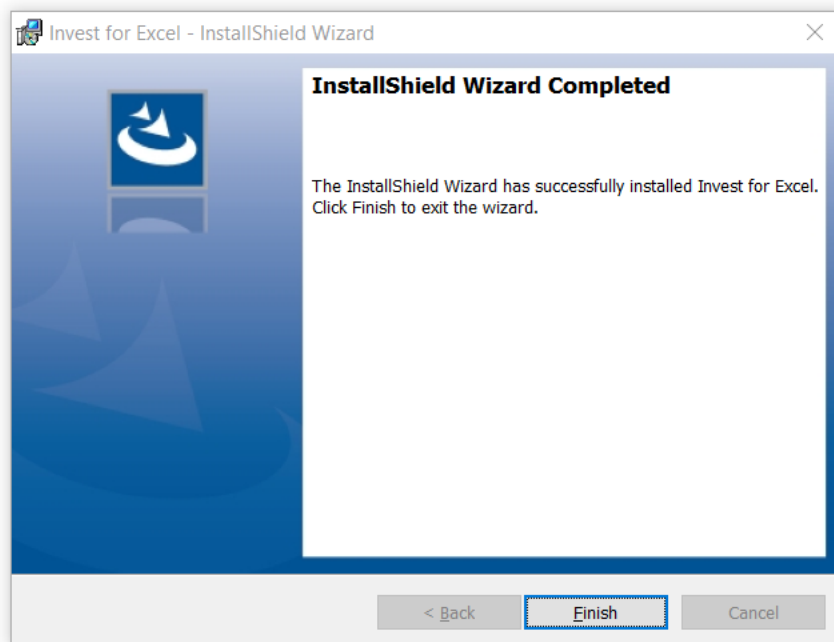
It is recommended to leave the default location that is automatically offered.



7. Press Install to proceed



8. Press Finish to complete the setup



9. The installation is complete, and you should now have the Invest for Excel icon on your Desktop:





## 5. Activate your installation

An Invest for Excel license can be activated online. If your computer is not connected to internet you can also create an activation file, which you can send by email to DataPartner from a device with internet connection (see “Activate offline” chapter below).

Note that if you have an old license installed on your computer and you are installing a new version of Invest for Excel, then no activation is usually needed.

If you are moving the license to a new computer, you should deactivate the license on your old computer (see “Deactivate” chapter below) and then activate on your new computer.

### Activate online

When you start Invest for Excel for the first time, an activation form is shown:

Invest for Excel Activation

DataPartner

invest  
FOR EXCEL

Close

Copyright (c) 1995-2020

**Activate**

1. Enter License number

Note! Your license number has been sent to your email. Please, copy it to this field.

2. Activate

Note! You need to be connected to internet to activate.

If you are not currently connected to internet, you need to create a file for offline activation and send it by email.

[Offline activation](#)

[www.investforexcel.com](http://www.investforexcel.com)

Enter the license number that has been sent to your email. Depending on the license number, you could be asked to enter user information.

**Activate**

1. Enter License number

Note! Your license number has been sent to your email. Please, copy it to this field.

2. Enter user information:

First name  Last name

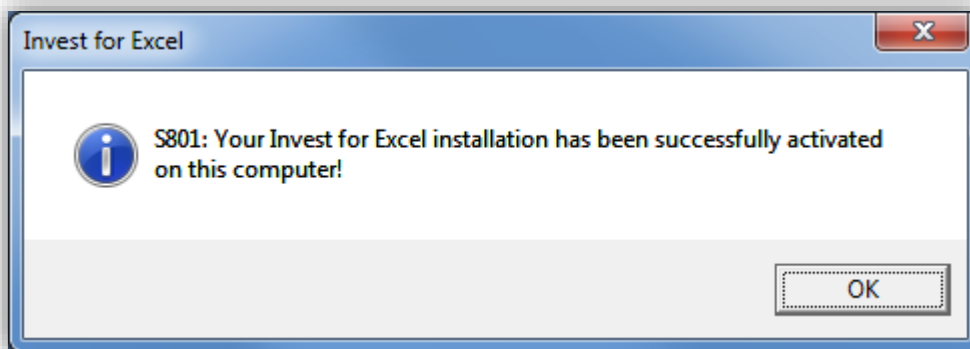
Email

Note! If you have activated before, please enter the same email address.

Please send me information about updates and training to my email.

3. Activate  Note! You need to be connected to internet to activate.

Press the Activate button to activate the license. A message is shown for successful activation or failure.



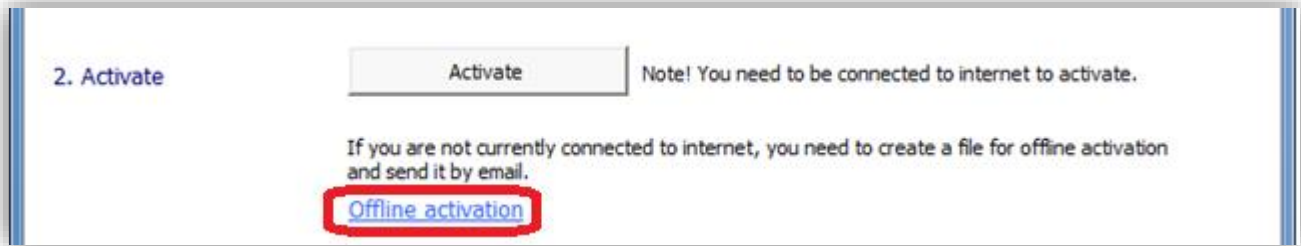
When you press ok, Invest for Excel is started. The next time you start Invest for Excel, no messages or forms are displayed upon start.



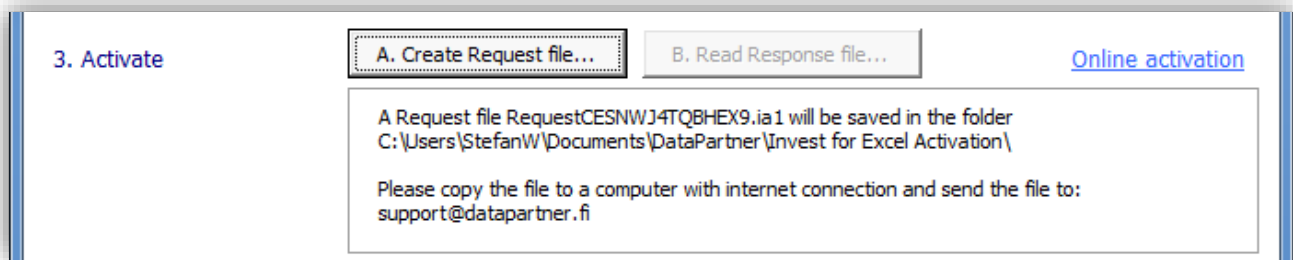
**Congratulations!** You are now ready to start modelling in Invest for Excel!

## Activate offline

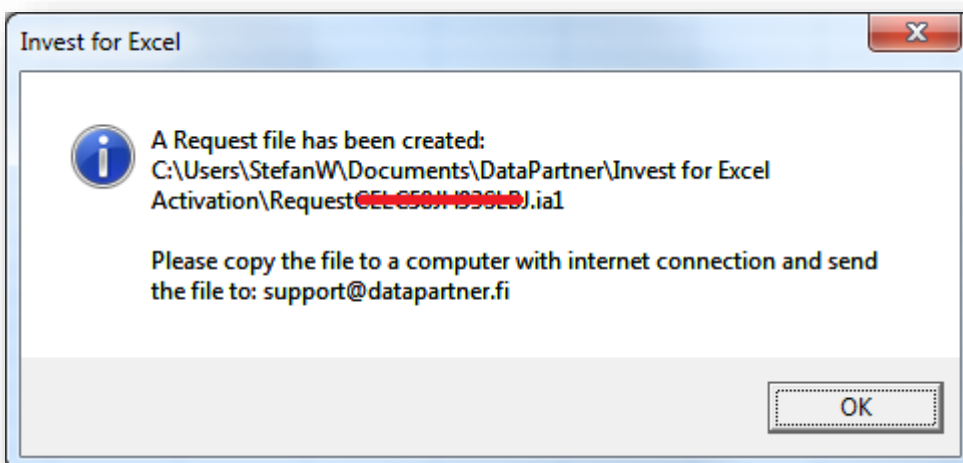
Offline activation works so that you send an activation request file to DataPartner. Press “Offline activation” to start.

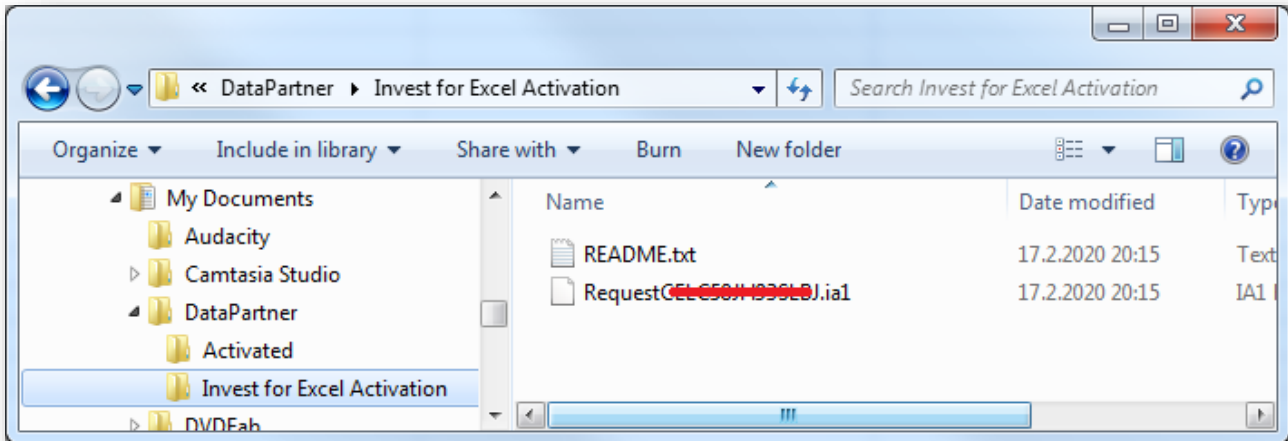


Offline buttons are shown.

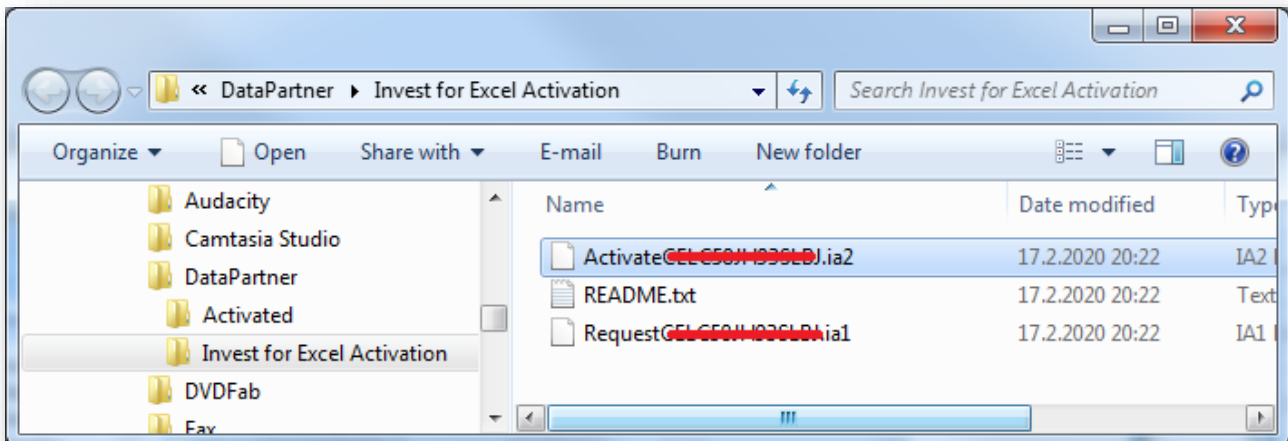


Press “A. Create Request file...”. A message is shown about where the request file (.ia1) is saved and then the folder is opened. A readme file is also written with the information where to send the request file.

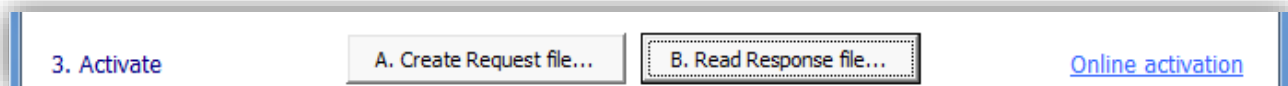




DataPartner will send back a response file with the activation information (.ia2). Copy the response file (\*.ia2) to the folder including the request file (\*.ia1).



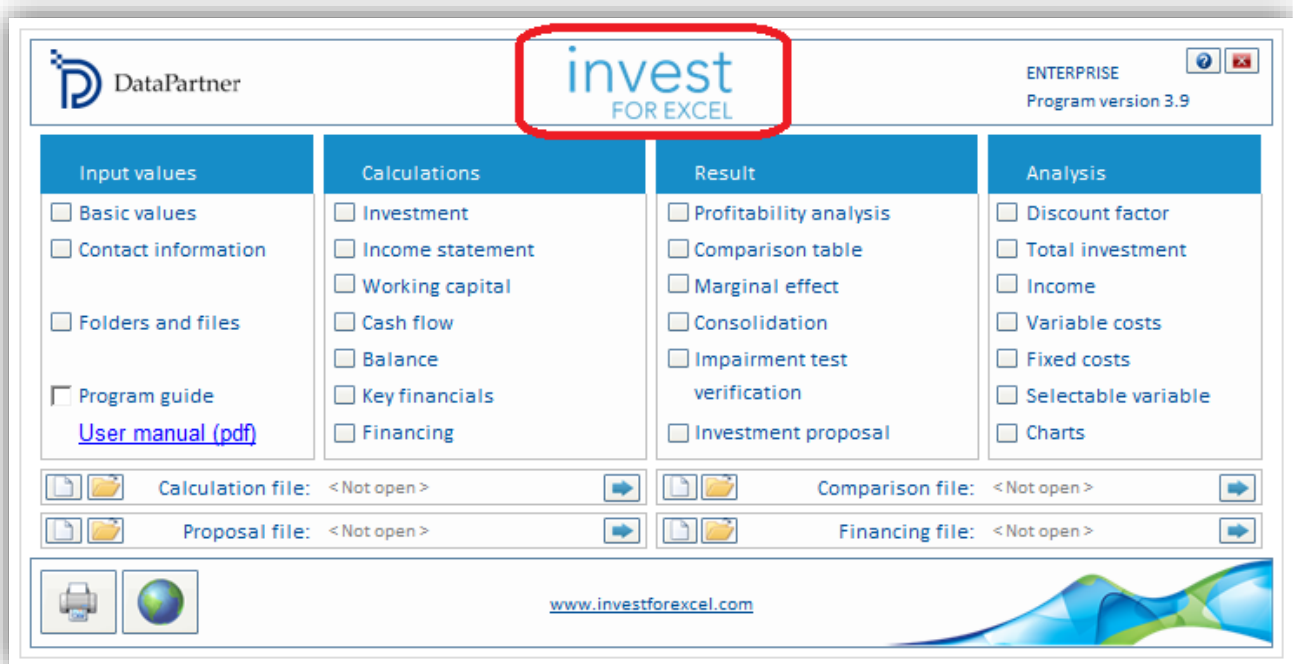
Read the response file by pressing “B. Read Response file” in the activation dialog box.



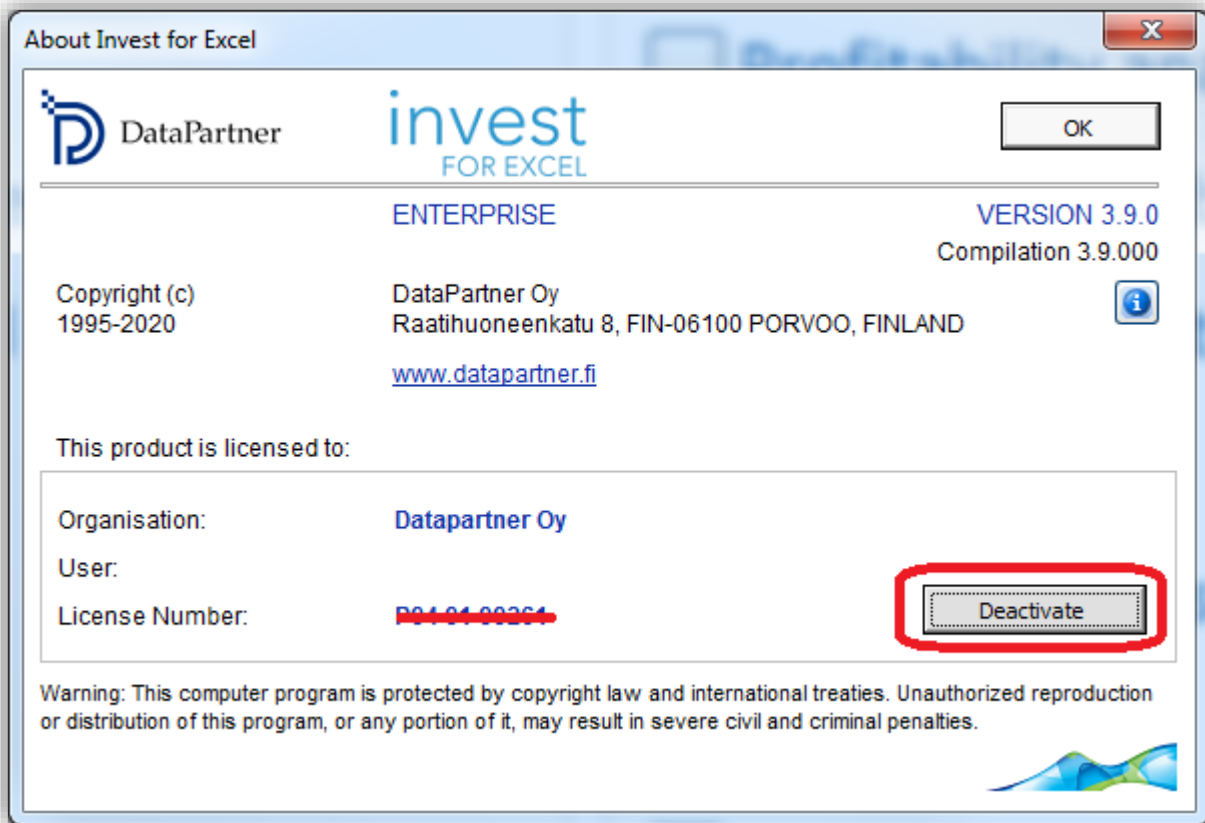
**Congratulations!** You are now ready to start modelling in Invest for Excel!

## Deactivate

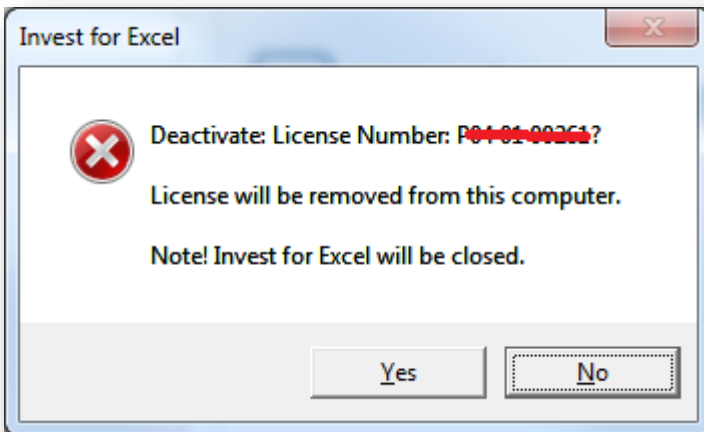
To deactivate Invest for Excel, open the “About Invest for Excel” dialog box either from the Invest for Excel “Other” menu or by pressing the Invest for Excel logo on the home page.



Press the “Deactivate” button in the “About Invest for Excel” to deactivate your license.



A confirmation message is shown.



Choose “Yes” to deactivate.

Note! After deactivating, please also uninstall Invest for Excel from the computer if you do not plan to use the software on that computer anymore.

## Advanced installation options

### Silent installation options

It is possible to install Invest for Excel® autonomously, without the visual user interface of installation (referred to as silent or quiet installation). You can perform the whole installation procedure with just one command line command. In some IT environments it may be more practical for IT administrators to install Invest for Excel on multiple computers using a command line locally or even remotely. Invest for Excel package supports it and the instructions are provided below. However, it is worth noting that this capability is very dependent on your IT environment setup.

If needed, DataPartner support is happy to assist you with installation advice in your situation.

### Local installation

1. Extract the installation package to a convenient location. The universal package is a self-extracting .exe archive and cannot be used for silent installation by itself. It needs to be extracted first, so that you can gain access to the **Invest for Excel.msi** installation file.
2. Open Command Prompt as Administrator
  - a. Start > Type "cmd".
  - b. Right click on found "cmd.exe" and select "Run as administrator".
3. Navigate to the directory with installation package
  - a. Using command "cd <installation package path>"
4. Run following command to install:  
`msiexec /i "Invest for Excel.msi" /quiet INVESTLANGUAGE="en"  
INSTALLDIR="C:\Program Files\DataPartner\Invest for Excel Custom Folder"`

Parameters:

- **INVESTLANGUAGE** defines first run language of Invest for Excel. Possible options are: **en, ru, fi, se, pl, de, es, bg**. If not specified, it installs English.
  - **INSTALLDIR** defines installation location. Can be set to any preferred path. The default location is usually **C:/Program Files (x86)/DataPartner/Invest for Excel/**.
5. If need, this is the command to **Uninstall:**

```
msiexec /x "Invest for Excel.msi" /quiet
```

## Remote installation

- Using PsExec utility to remotely run silent installation (MSIEXEC)

This method requires the administrator to download a free Microsoft's utility called **PsExec** (can be downloaded from this page: <https://technet.microsoft.com/en-us/sysinternals/bb897553>). Download and extract the PSTools archive to convenient location (e.g. C:\PSTools\).

The PsExec allows to run the silent installation command (MSIEXEC) on a remote computer. Follow the preparation and command's parameters guidelines exactly like in the silent installation guide above, except for putting "**psexec //computer**" before the installation command **AND** making sure that installation package is located on a **shared drive** with path to .msi package being accessible to all target computers (e.g. **\\Server\Software\InvestForExcel\Invest for Excel.msi**).

Example command to remotely install Invest for Excel®:

```
psexec //computer msiexec /i "\\Server\Software\InvestForExcel\Invest for  
Excel.msi" /quiet INVESTLANGUAGE="en" INSTALLDIR="C:\Program  
Files\DataPartner\Invest for Excel Custom Folder"
```

Parameters:

**//computer** represents the computer name of target computer where Invest for Excel needs to be installed. It can also be an IP address (e.g. //192.161.1.5)

**Note:** If account you run it from is a Domain Administrator and has permission to run programs on target computers, it will work as is. However, if the account you are logged in with does not have enough privilege, you can run the command with another account's credentials by adding optional username (-u) and password (-p) parameters, e.g.:

```
psexec //computer -u domain\username -p password123 msiexec /i  
"\\Server\Software\InvestForExcel\Invest for Excel.msi" /quiet  
INVESTLANGUAGE="en" INSTALLDIR="C:\Program Files\DataPartner\Invest for  
Excel Custom Folder"
```

The uninstall command from above will also work the same way with PsExec tool.

**Hint 1:** If there are many computers, you can put their names or IP addresses into text file and reference that file in the command as @file instead of \\computer.

**Hint 2:** If you would like to install Invest for Excel® on all computers in the domain, it is also possible to run command with wildcard parameter \\\* instead of \\computer.



- **Using Windows Domain Group Policy**

Group Policy can be used to install Invest for Excel® on all computers that belong to certain Windows Domain Groups (either existing or new, with all computers where Invest for Excel® needs to be installed added). Group Policy Object needs to be created and Invest for Excel® installation package assigned to it (pointing to .MSI file) from a shared drive location, where users would be able to access it (e.g. <\\Server\Software\InvestForExcel>).

Please, read the Microsoft article KB816102 for more details about this method (<https://support.microsoft.com/en-us/kb/816102>).

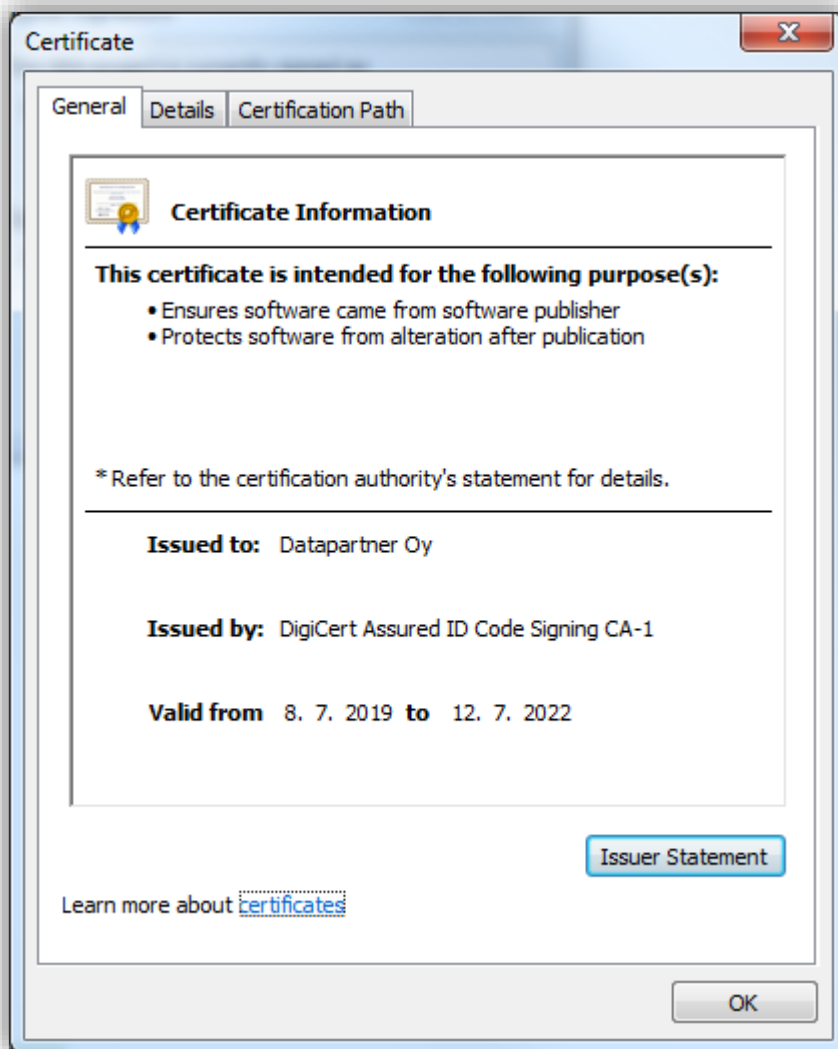
## Microsoft Excel versions supported

Invest for Excel 3.9 is supported for:

Microsoft Excel versions 2007, 2010, 2013, 2016, 2019 and 365 Desktop.  
running in Windows Vista, Windows 7, Windows 8, Windows 8.1 and Windows 10.

## Digital signature

Invest for Excel program code is signed with a digital signature which is valid until July 12, 2022.



## Privacy Policy

DataPartner considers itself a data processor and the customer a data controller. All the data always belongs to the customer and on customer's request we can edit the data, transfer the data back to the customer, and/or completely erase it in our databases.

Read more at <https://www.datapartner.fi/en/company/privacy-policy>

## Have questions?

We are happy to help you in any of the steps listed above, as well as with using the Invest for Excel.

### Contact DataPartner Support

- Email: [support@datapartner.fi](mailto:support@datapartner.fi)
- Phone: +358 19 54 10 100
- Online chat: <https://www.datapartner.fi/chat>